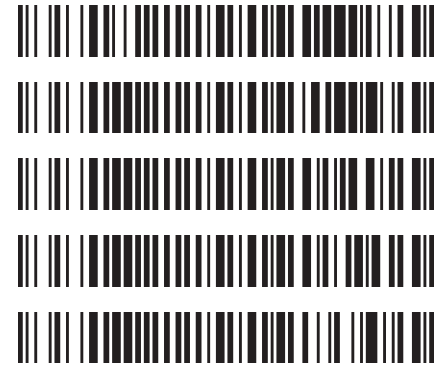


**Worklist: 2914**

<u>LAB_CASE</u>	<u>ITEM</u>	<u>TASK_ID</u>	<u>DESCRIPTION</u>
C2019-0088	2	138622	AM 3 Urine Carboxy-THC
P2019-0205	1	138623	AM 3 Urine Carboxy-THC
P2019-0258	1	138624	AM 3 Urine Carboxy-THC
P2019-0259	1	138625	AM 3 Urine Carboxy-THC
P2019-0351	1	138626	AM 3 Urine Carboxy-THC



Area Percent Report

CG

Data Path : G:\TOX\Pocatello\MMS\CDS\2019\am 3 worklist 2914\  
Data File : THC-PC1.D  
Acq On : 06 Feb 2019 12:15  
Operator : ISP\datastor  
Sample : Spiked Positive c-THC Control  
Misc : c-THC lot # 0497429 in Negative Lot # POC062718; Worklist 2914  
ALS Vial : 22 Sample Multiplier: 1

Integration Parameters: events.e  
Integrator: ChemStation

Method : C:\gcms\1\methods\TOX.M  
Title :

Signal : EIC Ion 371.00 (370.70 to 371.70): THC-PC1.D\data.ms

peak #	R.T. min	first scan	max scan	last scan	PK TY	peak height	corr. area	corr. % max.	% of total
1	5.729	43	50	67	VV	149	2199	3.16%	2.758%
2	6.584	311	347	367	PV	3601	69629	100.00%	87.331%
3	7.008	483	495	518	VV	132	3600	5.17%	4.515%
4	7.221	528	568	585	PV 2	127	4302	6.18%	5.396%

Sum of corrected areas: 79729

Signal : EIC Ion 473.00 (472.70 to 473.70): THC-PC1.D\data.ms

peak #	R.T. min	first scan	max scan	last scan	PK TY	peak height	corr. area	corr. % max.	% of total
1	6.585	332	348	383	BV	1482	29025	100.00%	100.000%

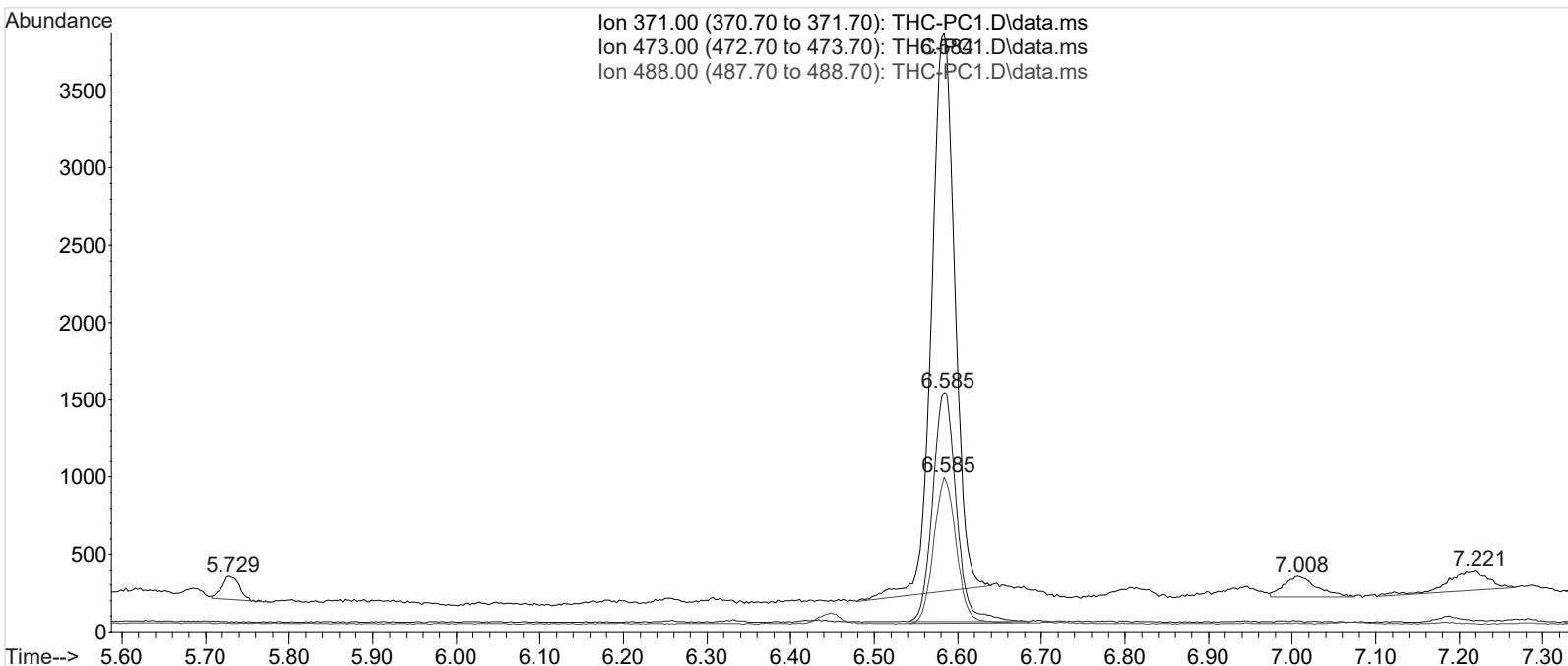
Sum of corrected areas: 29025

Signal : EIC Ion 488.00 (487.70 to 488.70): THC-PC1.D\data.ms

peak #	R.T. min	first scan	max scan	last scan	PK TY	peak height	corr. area	corr. % max.	% of total
1	6.585	333	348	375	BB	932	17568	100.00%	100.000%

Sum of corrected areas: 17568

TOX.M Wed Feb 06 17:30:39 2019



Area Percent Report

g

Data Path : G:\TOX\Pocatello\MMS\CDS\2019\am 3 worklist 2914\  
 Data File : THC-PC2.D  
 Acq On : 06 Feb 2019 17:15  
 Operator : ISP\datastor  
 Sample : Spiked Positive c-THC Control  
 Misc : c-THC lot # 0497429 in Negative Lot # POC062718; Worklist 2914  
 ALS Vial : 22 Sample Multiplier: 1

Integration Parameters: events.e  
 Integrator: ChemStation

Method : C:\gcms\1\methods\TOX.M  
 Title :

Signal : EIC Ion 371.00 (370.70 to 371.70): THC-PC2.D\data.ms

peak #	R.T. min	first scan	max scan	last scan	PK TY	peak height	corr. area	corr. % max.	% of total
1	5.725	41	49	64	VV	246	3545	3.07%	2.714%
2	6.512	299	322	324	PV	80	709	0.62%	0.543%
3	6.576	324	344	365	VV	6330	115320	100.00%	88.285%
4	6.999	480	492	522	VB	203	5471	4.74%	4.189%
5	7.209	541	564	581	VV 2	178	5577	4.84%	4.269%

Sum of corrected areas: 130622  
 Signal : EIC Ion 473.00 (472.70 to 473.70): THC-PC2.D\data.ms

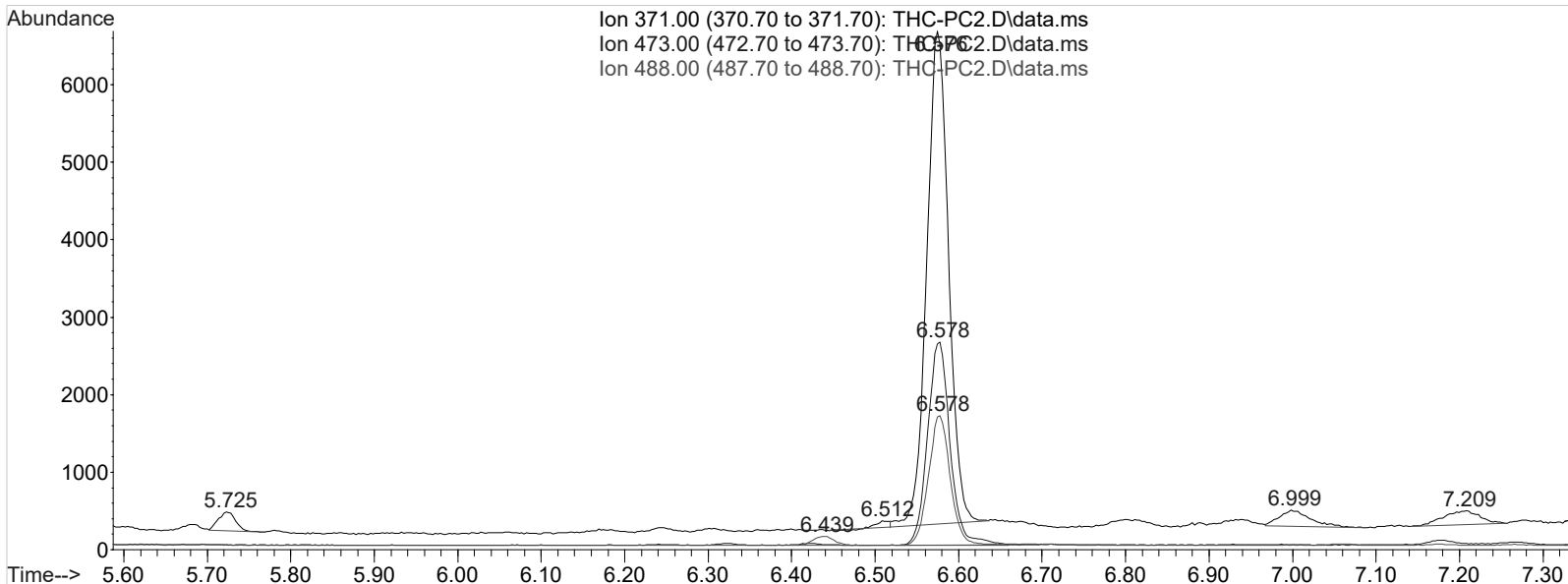
peak #	R.T. min	first scan	max scan	last scan	PK TY	peak height	corr. area	corr. % max.	% of total
1	6.578	329	345	386	BV	2616	48874	100.00%	100.000%

Sum of corrected areas: 48874  
 Signal : EIC Ion 488.00 (487.70 to 488.70): THC-PC2.D\data.ms

peak #	R.T. min	first scan	max scan	last scan	PK TY	peak height	corr. area	corr. % max.	% of total
1	6.439	286	297	316	BB 2	115	2009	6.66%	6.246%
2	6.578	330	345	374	BV	1666	30163	100.00%	93.754%

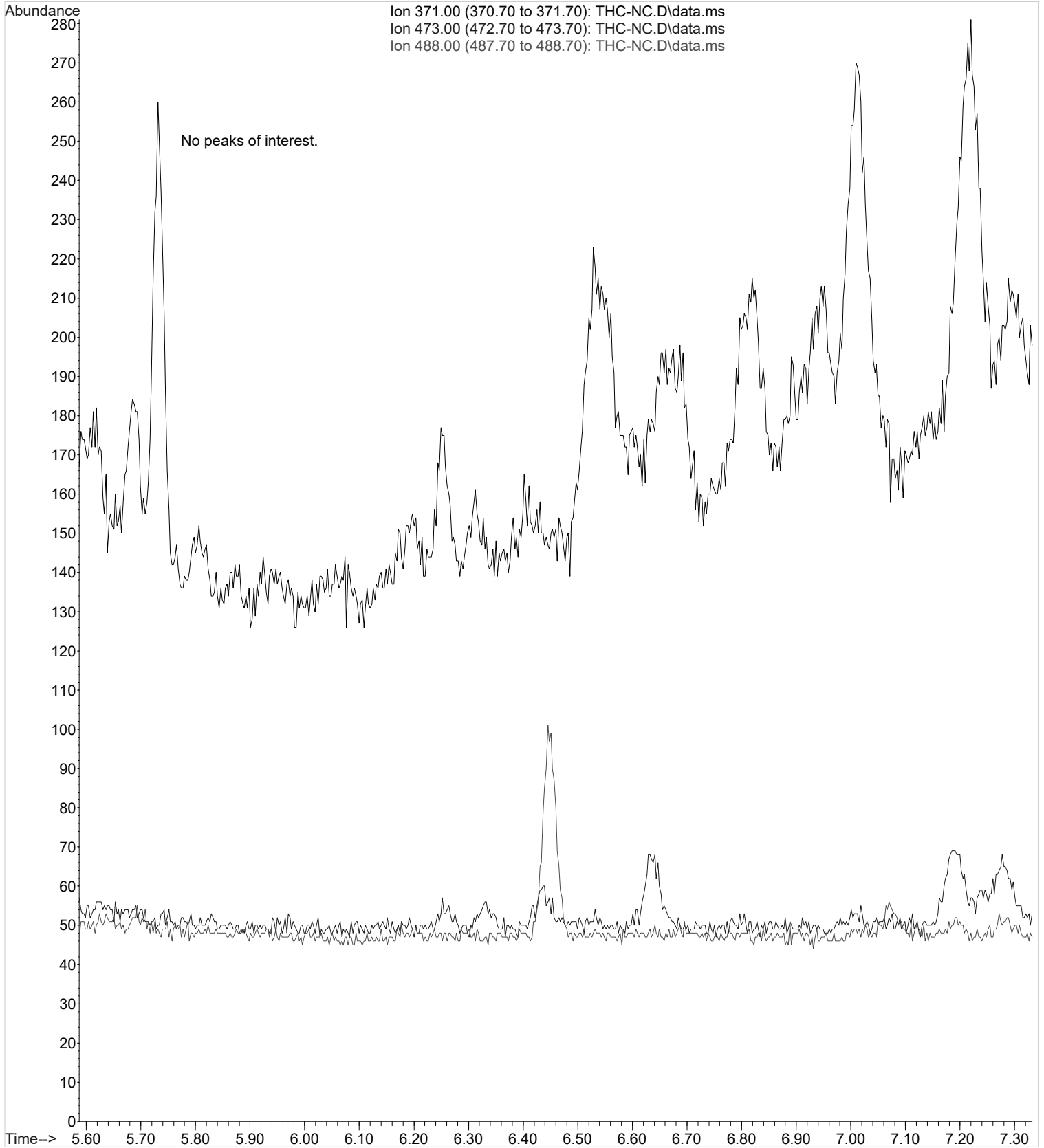
Sum of corrected areas: 32173

TOX.M Wed Feb 06 17:31:46 2019



CS

File :G:\TOX\Pocatello\MMS\CDS\2019\am 3 worklist 2914\THC-NC.D  
Operator : ISP\datastor  
Acquired : 06 Feb 2019 12:04 using AcqMethod U-CANN 7-2018.M  
Instrument : Major Mass Spec  
Sample Name: Negative Control  
Misc Info : Lot # POC062718; AM #3 Worklist 2914  
Vial Number: 21



Data Path : G:\TOX\Pocatello\MMS\CDS\2019\am 3 worklist 2914\  
Data File : THC-C3.D  
Acq On : 06 Feb 2019 15:04  
Operator : ISP\datastor  
Sample : Biorad C3 Control  
Misc : C3 Lot # 68440; Worklist 2914  
ALS Vial : 23 Sample Multiplier: 1

Integration Parameters: events.e  
Integrator: ChemStation

Method : C:\gcms\1\methods\TOX.M  
Title :

Signal : EIC Ion 371.00 (370.70 to 371.70): THC-C3.D\data.ms

peak #	R.T. min	first scan	max scan	last scan	PK TY	peak height	corr. area	corr. % max.	% of total
1	5.759	49	61	81	VB	135	2171	12.25%	10.915%
2	6.618	316	359	380	PV	873	17719	100.00%	89.085%

Sum of corrected areas: 19890

Signal : EIC Ion 473.00 (472.70 to 473.70): THC-C3.D\data.ms

peak #	R.T. min	first scan	max scan	last scan	PK TY	peak height	corr. area	corr. % max.	% of total
1	6.619	344	359	383	BB	356	6773	100.00%	100.000%

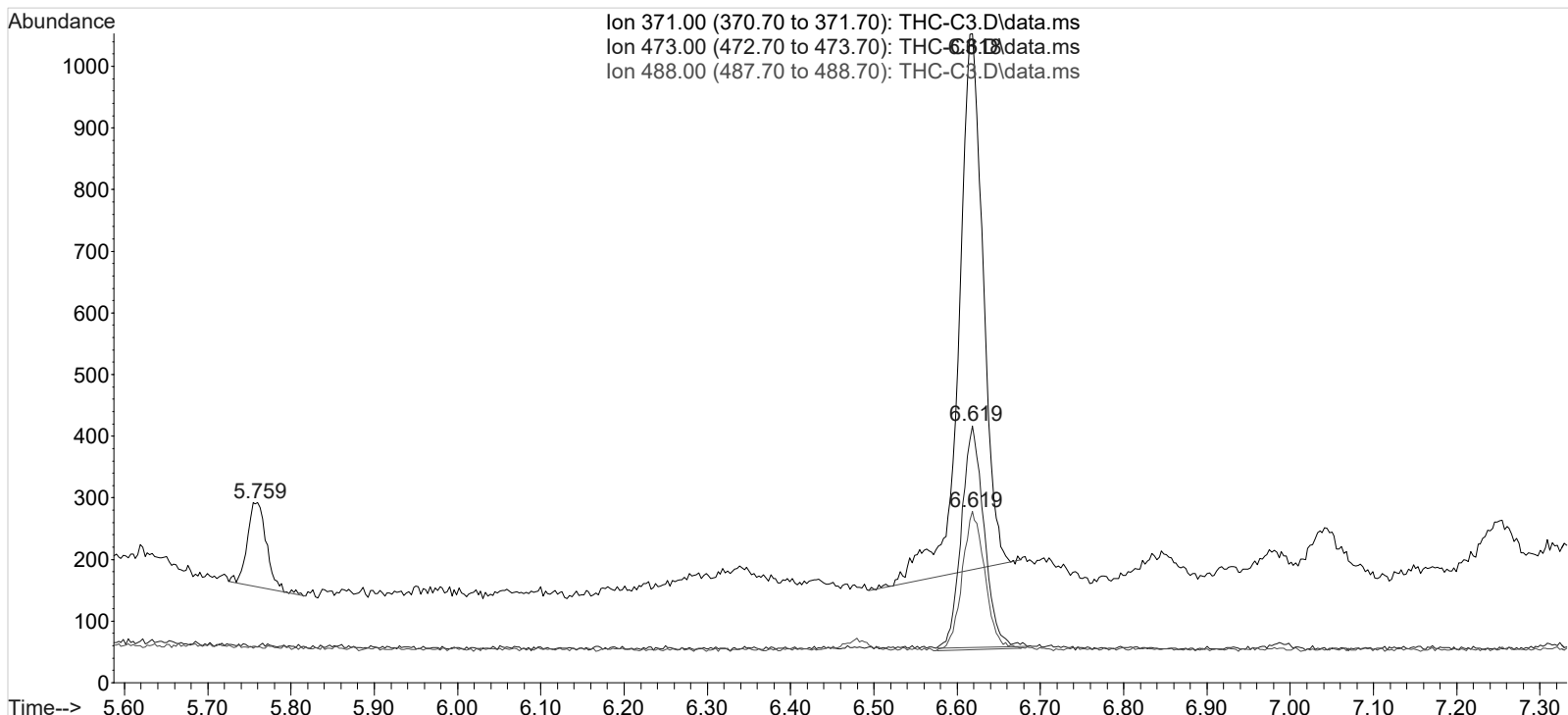
Sum of corrected areas: 6773

Signal : EIC Ion 488.00 (487.70 to 488.70): THC-C3.D\data.ms

peak #	R.T. min	first scan	max scan	last scan	PK TY	peak height	corr. area	corr. % max.	% of total
1	6.619	344	359	379	BB	222	4234	100.00%	100.000%

Sum of corrected areas: 4234

TOX.M Wed Feb 06 17:32:27 2019



**Run Date:** 2/6/2019

**Worklist #:** 2914

**Laboratory Case #:** BioRad C3 Lot: 68440

**Case Calculations:**

EIC Ion 371 Corr. Area: 17719

EIC Ion 473 Corr. Area: 6773

EIC Ion 488 Corr. Area: 4234

473:371 Ratio: **0.382**

488:371 Ratio: **0.239**

**Quality Control Calculations:**

	1st Control	2nd Control
EIC Ion 371 Corr. Area:	69629	115320
EIC Ion 473 Corr. Area:	29025	48874
EIC Ion 488 Corr. Area:	17568	30163
Ratio of 473:371:	0.417	0.424
		Average: 0.420
Ratio of 488:371:	0.252	0.262
		Average: 0.257

**Acceptable Retention Time Range:** 6.484 to 6.676

**Approximate Minimum Corrected Area of 371 Ion:** 13926

**Acceptable 473:371 Ratio Range:** 0.336 to 0.504

**Acceptable 488:371 Ratio Range:** 0.206 to 0.308